

***KONETOOL***

**KONE 2020**  
**CARBIDE TOOL LTD**

[WWW.KONETOOL.COM](http://WWW.KONETOOL.COM)  
[WWW.KONECARBIDE.COM](http://WWW.KONECARBIDE.COM)

FOCUS ON CARBIDE TOOLS SUPPLY CHAIN INTEGRATION!



## Company Profile

Through 8 years development , KONETOOL has grown from a small woodworking manufacturer, to a compound supply-driven trading company(Factory + Trade Mode) in the world.

Our product supply chain stretches to diverse splitting machine blades, Hardmetal inserts & tools, tools or parts of machinery and construction field, total four categories of cemented carbide products plus reliable customizing product service.

In addition to our own sales and service, we rely on independent and long-standing distribution partners. This is how we ensure that you receive prompt, qualified product, and comprehensive service and support.

## Company message

Under the belief of “ Be partner with KONETOOL ”, we left our footprint all around the world, we earning deep trust of customers and friends, we are constantly devoting to provide the most cost-effective supply solutions for you.

# COMPANY HISTORY



2020

Optimizing Sales and Service team, actively provide cost-effective solutions for customers during the long-term impact of COVID-19.

2019

Enhance cooperation with 37 reliable cemented carbide factories, integrates & optimizes our supply chain management mode.

2018

Cooperated with industrial leading companies for supplying of construction machinery products, rubber snowplow blade and VSI crusher parts were successfully tested by North America and Asian customers.

2017

Based on high precision product needs, Customized on-demand service was provided. At the same time, KONE TOOL invested CNC production line of carbide rotary burrs.

2016

Investing & establishing production line of slitting knives for carbidepacking industry.

2015

Expanding the category of carbide woodworking tools, setting Supply chain evaluation system, ensure diverse product requirement of customers.

2014

Establishes independent technical & inspection department, upgrades 11 inspection processes, qualified ratio reaches 98% by production.

2013

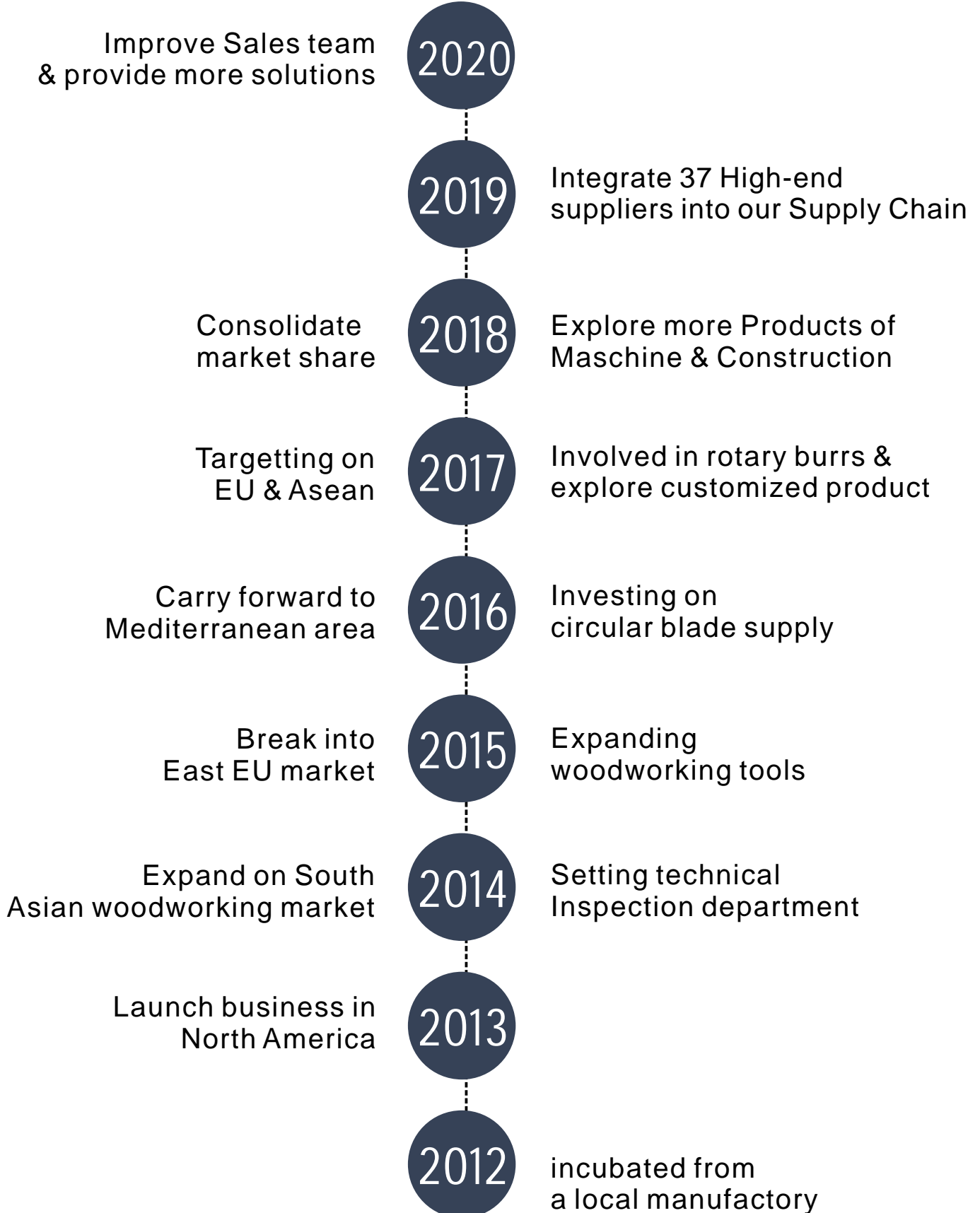
Breaks into North America business, building solid relationship with 15 woodworking customers.

2012

KONETOOL was a supply-driven trading company, incubated with a small local factory, which was the first one using full CNC system to produce carbide woodworking blades on chinese market.



# Dual-Market Strategy

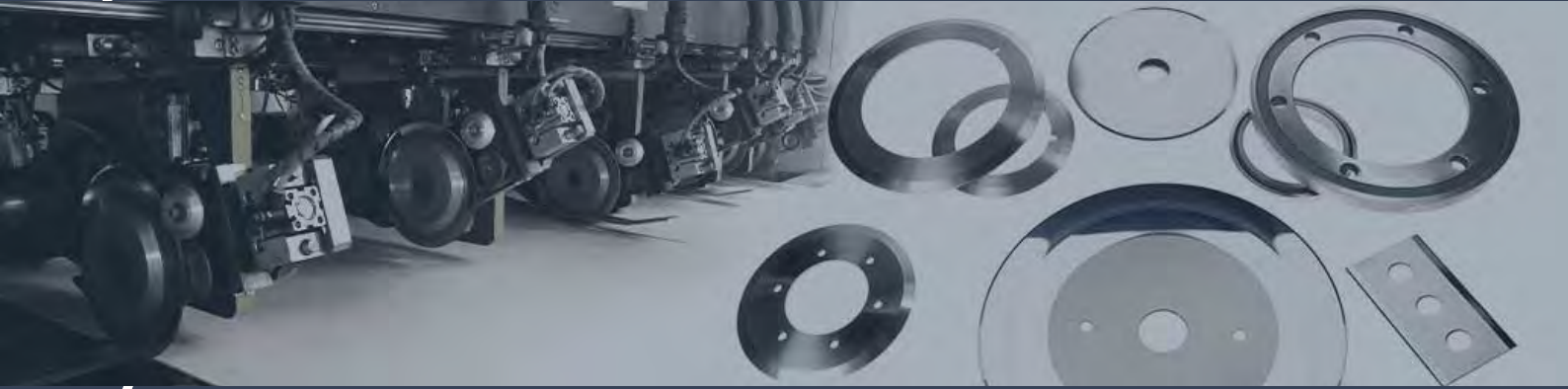


# MAIN CORE PRODUCT RANGE

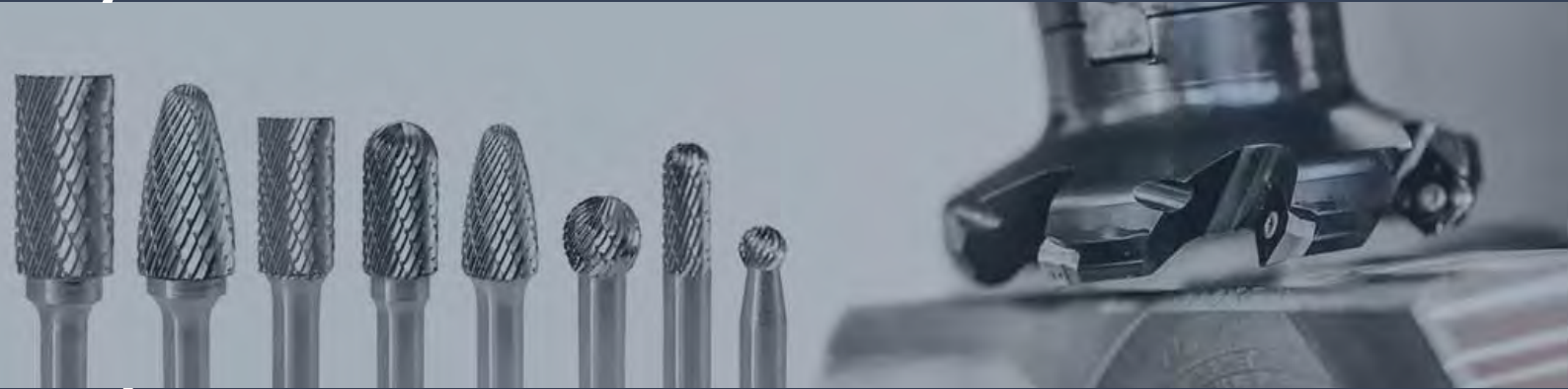
Woodworking field



Slitting blades and knives



Metalworking



Construction & Machinery field



**/ Woodworking field**

**/ Standard inserts**



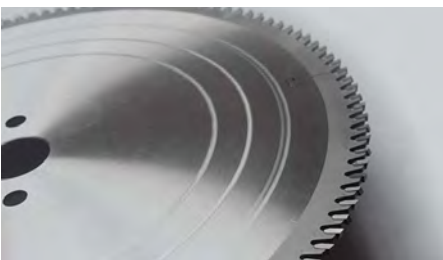
**/ Profiled blanks & Profile knives**



**/ Woodturning tools**



**/ Saw blade and Saw tips**



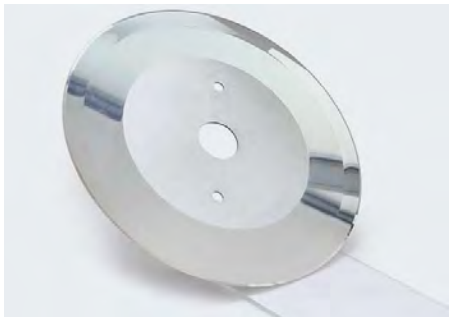
**/ Router bits and wood drill bits**



For more products, please click on the official website

[www.konetool.com](http://www.konetool.com)  
[www.konecarbide.com](http://www.konecarbide.com)

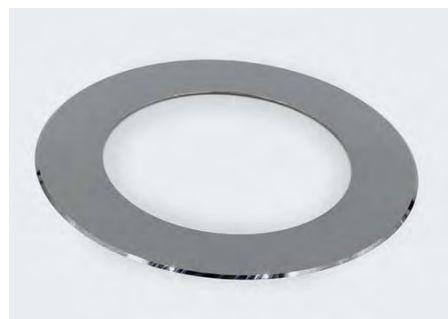
**/ Corrugated slitting knives**



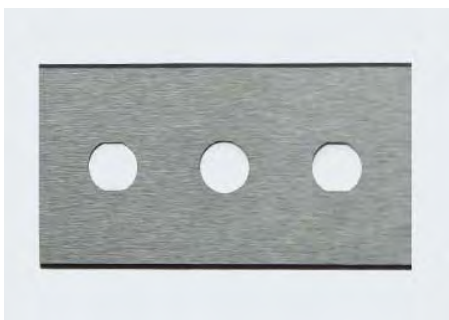
**/ Cigarette Filter knives**



**/ Rewinder blade & Battery Pole blade**



**/ Packaging & Printing knives**



For more products, please check our website or contact our sales directly

[www.konetool.com](http://www.konetool.com)  
[www.konecarbide.com](http://www.konecarbide.com)

**/ Carbide burrs/ Burr sets**



**/ Carbide endmill and saw milling cutter**



**/ Carbide rods/strips**



For more products, please click on the official website

[www.konetool.com](http://www.konetool.com)  
[www.konecarbide.com](http://www.konecarbide.com)



**/ Rubber snow plow blade/Tips**



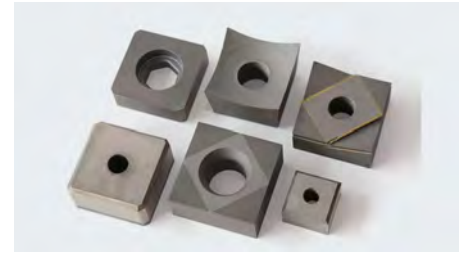
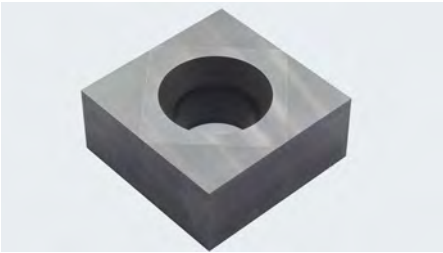
**/ Road milling bits & Tunneling tooth**



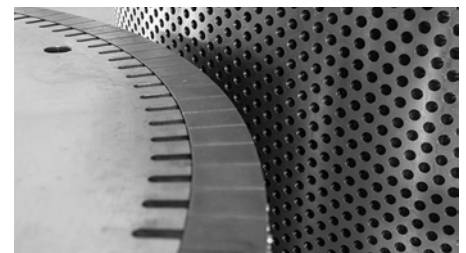
**/ VSI crusher cutter**



**/ Crushing cutter for recycle**



**/ HPGR Crushing**



For more products, please click on the official website

[www.konetool.com](http://www.konetool.com)  
[www.konecarbide.com](http://www.konecarbide.com)

**/ Scraper blades and tools**



**/ Carbide nail burs/dental burs**



For more products, please click on the official website

[www.konetool.com](http://www.konetool.com)  
[www.konecarbide.com](http://www.konecarbide.com)

**/ Special carbide insert/knives**

**/ Carbide wear parts**

**/ Carbide tips for hardfacing**

**/ Carbide for 3D print**

**/ Carbide waterjet**

**/ Gundrill and gundrill blank tip**

**General Strategy for your mould cost**

- Evaluate your mould cost & potential Qty
- Provide reasonable mould cost solution
- Refund your mould cost when purchased Qty reaches factory's baseline



For more products, please click on the official website

[www.konetool.com](http://www.konetool.com)  
[www.konecarbide.com](http://www.konecarbide.com)

# TECHNOLOGICAL PROCESS INTRODUCTION



Granulation

Press

HIP Sintering



Refining process



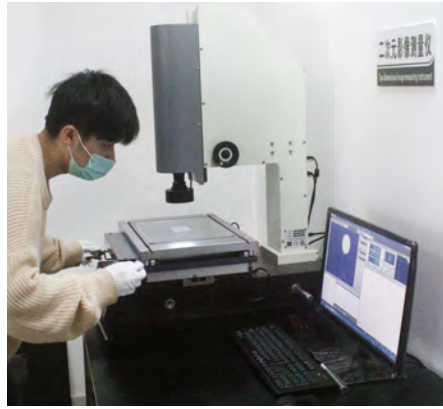
Welding process



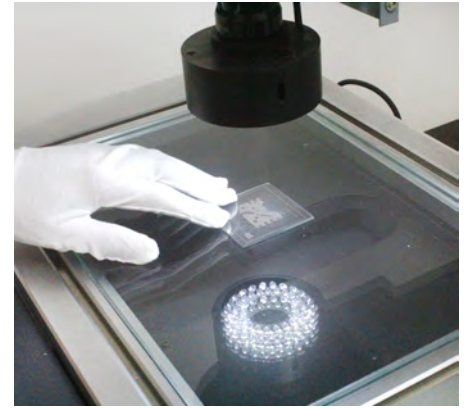
# Product Quality Control



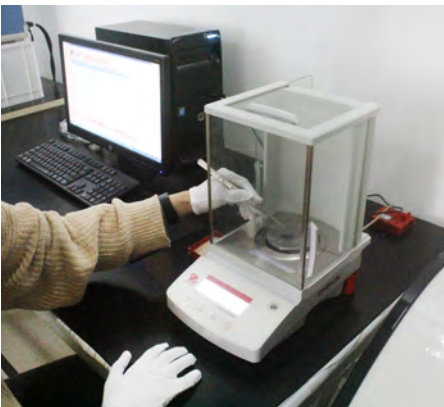
Coercive magnetometer



Two-dimensional image measuring instrument



Two-dimensional image measuring instrument



Multifunctional balance

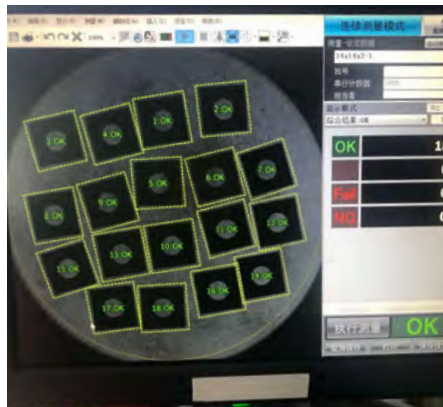
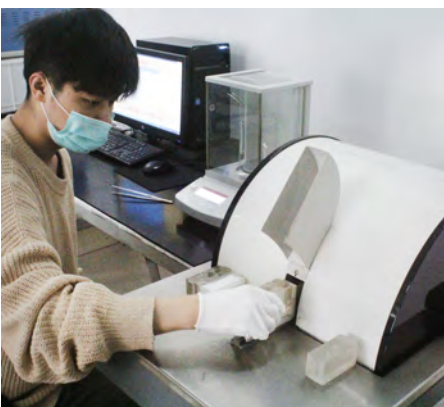


Image measuring instrument



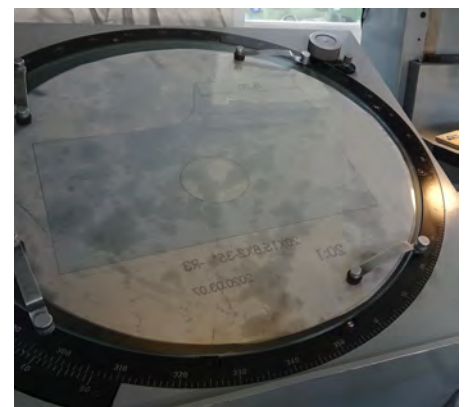
Image measuring instrument



Cobalt magnetometer



Profile projector



Profile projector

# EXHIBITION HISTORY



2015 IRAN WOOD 2015



Packaging Exhibition in Egypt 2017 2017



2018 Chicago machine tool show 2018



INDIA WOOD 2018 2018



2014 South Africa Woodworking Machinery Exhibition 2014



2016 2016 TURKEY WOOD

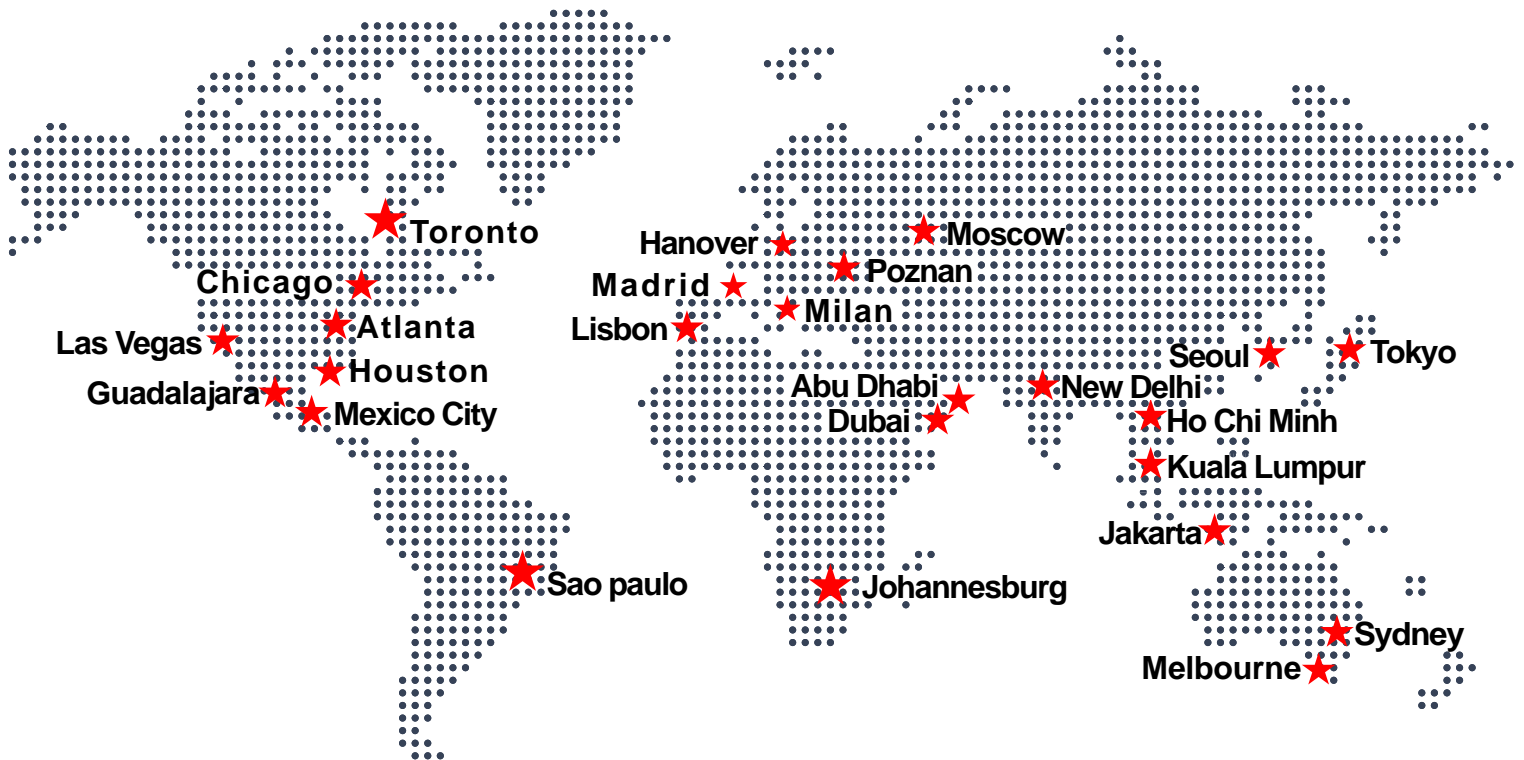


2017 2017 INDONESIA WOOD



2019 LIGNA PLUS HANNOVER

# OUR FOOTPRINT



## Your aims

**Product Quality** - You want to get full inspected products to serve your customer

**Availability**- You expect to count on the right parts being available when and where you need them.

**Reduced Cost** - You aim to reduce your total cost with shorter lead time and longer product life span.

## Our service

-To ensure you get the best parts to utilize the potential of your equipment or resale value

-To find a trustful partner who can deliver parts when you need them

-To get fair and stable price without sacrificing product quality



# ***KONETOOL***

**KONE CARBIDE TOOL LTD**

No 777 Haike Road Cross-Strait Industrial  
Park Wenjiang 611130 Chengdu China

---

fax +86.28.6171.6272 +86.28.6171.6272  
www.konecarbide.com www.konetool.com

---

General Requirements:	info@konetool.com
European Customer:	Jane@konetool.com
Asian & Oceanian Customer:	Sunny@konetool.com
North&LatinAmerica Customer:	Selena@konetool.com
Middle East & Africa Customer:	Sales@konetool.com

---